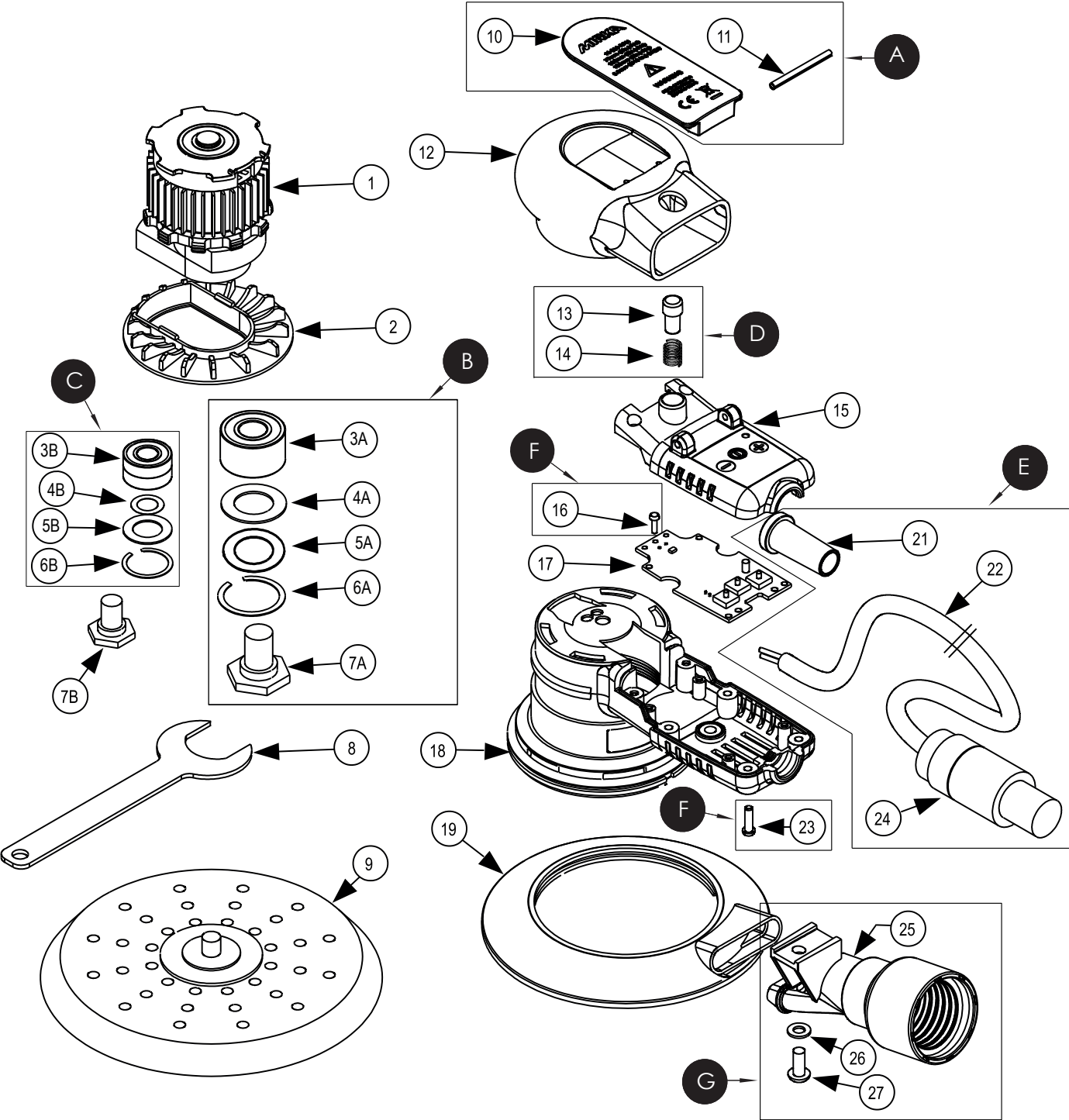


# Exploded view of CEROS 77 mm, 125 mm & 150 mm

Updated 18.06.2021



## CEROS 77 mm, 125 mm and 150 mm Spare Part kits

Electrical tool must be serviced by a qualified repair person and in accordance with national requirements.

**Note!** Repairs done by non-authorized repairer will breach the Mirka warranty.

Mirka Code	Item	Description	Kit	QTY	Tightening Torque
<b>MIN6221011</b>		<b>Lever kit Orbit 2,5 mm</b>			
	10	Lever	<b>A</b>	1	
	11	Pin		1	
<b>MIN6521011</b>		<b>Lever kit Orbit 5 mm</b>			
	10	Lever	<b>A</b>	1	
	11	Pin		1	
<b>MIE6536311</b>		<b>Spindle Bearing Dual Seal kit 125/150mm</b>			
	3A	Double Row Bearing		1	
	4A	Dual Seal	<b>B</b>	1	
	5A	Washer		1	
	6A	Retaining Ring		1	
	7A	Spindle 5/16" - 125/150mm		1	
<b>8993019611</b>		<b>Spindle Bearing kit 77 mm</b>			
	3B	Bearing		2	
	4B	Spacer	<b>C</b>	1	
	5B	Washer		1	
	6B	Retaining Ring		1	
<b>MIN6521311</b>		<b>Start Button kit</b>			
	13	Start Button	<b>D</b>	1	
	14	Start Button Spring		1	
<b>MIN6522211</b>		<b>DC Cable kit 4 m</b>			
	21	Cable Support	<b>E</b>	1	
	22	DC Cable 4m		1	
	24	DC Connector		1	
<b>MIN6522311</b>		<b>Screw kit</b>			
	16	PCB Screws	<b>F</b>	4	
	23	Housing Screws		6	
<b>MIN6519011</b>		<b>Exhaust Fitting kit 28 mm CV</b>			
	25	Swivel Exhaust Assembly 28mm	<b>G</b>	1	
	26	Washer		1	
	27	Exhaust Pipe Screw		1	

Separate spare parts on next page.

## CEROS 77 mm, 125 mm and 150 mm Spare Parts

Mirka Code	Item	Description	Kit	QTY	Tightening Torque
MIN6210111	1	<b>Motor 150mm/2,5mm*</b>		1	
MIN6510111	1	<b>Motor 150mm/5mm*</b>		1	
MIN5510111	1	<b>Motor 125mm/5mm*</b>		1	
MIN3210111	1	<b>Motor 77mm/2,5mm*</b>		1	
MIN6210211	2	<b>Fan 150mm/2,5mm</b>		1	
MIN6510211	2	<b>Fan 150mm/5mm</b>		1	
MIN5510211	2	<b>Fan 125mm/5mm</b>		1	
MIN3210211	2	<b>Fan 77mm/2,5mm</b>		1	
	3A	Double Row Bearing	B	1	
	3B	Bearing	C	2	
	4A	Dual Seal	B	1	
	4B	Spacer	C	1	
	5A	Washer	B	1	
	5B	Washer	C	1	
	6A	Retaining Ring	B	1	
	6B	Retaining Ring	C	1	
8995603201	7A	<b>Spindle 5/16" - 125/150mm</b>	B	1	
8993015011	7B	<b>Spindle 1/4" - 77mm</b>		1	
8995604121	8	<b>Pad Wrench 24mm - 125/150mm</b>		1	
8993008012	8	<b>Pad Wrench 17mm - 77mm</b>		1	
8292605011	9	<b>Backing Pad Net 150 mm 6" 5/16" 48H Medium 130 g</b>		1	
8292502011	9	<b>Backing Pad Net 125 mm 5" 5/16" 28H Medium 100 g</b>		1	
8294791211	9	<b>Backing Pad 77mm 1/4" Grip 6H Medium</b>		1	
	10	Lever	A	1	
	11	Pin	A	1	
MIN6511211	12	<b>Grip</b>		1	
	13	Start Button	D	1	
	14	Start Button Spring	D	1	
MIN6511511	15	<b>Cover Plate</b>		1	
	16	PCB Screws	F	4	
MIN6511711	17	<b>Speed Controller*</b>		1	
MIN6511811	18	<b>Housing</b>		1	
MIN6511911	19	<b>Shroud 150mm</b>		1	
MIN6515911	19	<b>Shroud 125mm</b>		1	
MIN3211911	19	<b>Shroud 77mm</b>		1	
	21	Cable Support	E	1	
	22	DC Cable 4m	E	1	
	23	Housing Screws	F	6	
MIN6512411	24	<b>DC Connector</b>	E	1	
	25	Swivel Exhaust Assembly 28mm	G	1	
	26	Washer	G	1	
	27	Exhaust Pipe Screw	G	1	

\* Spare parts only available to authorized repairers.