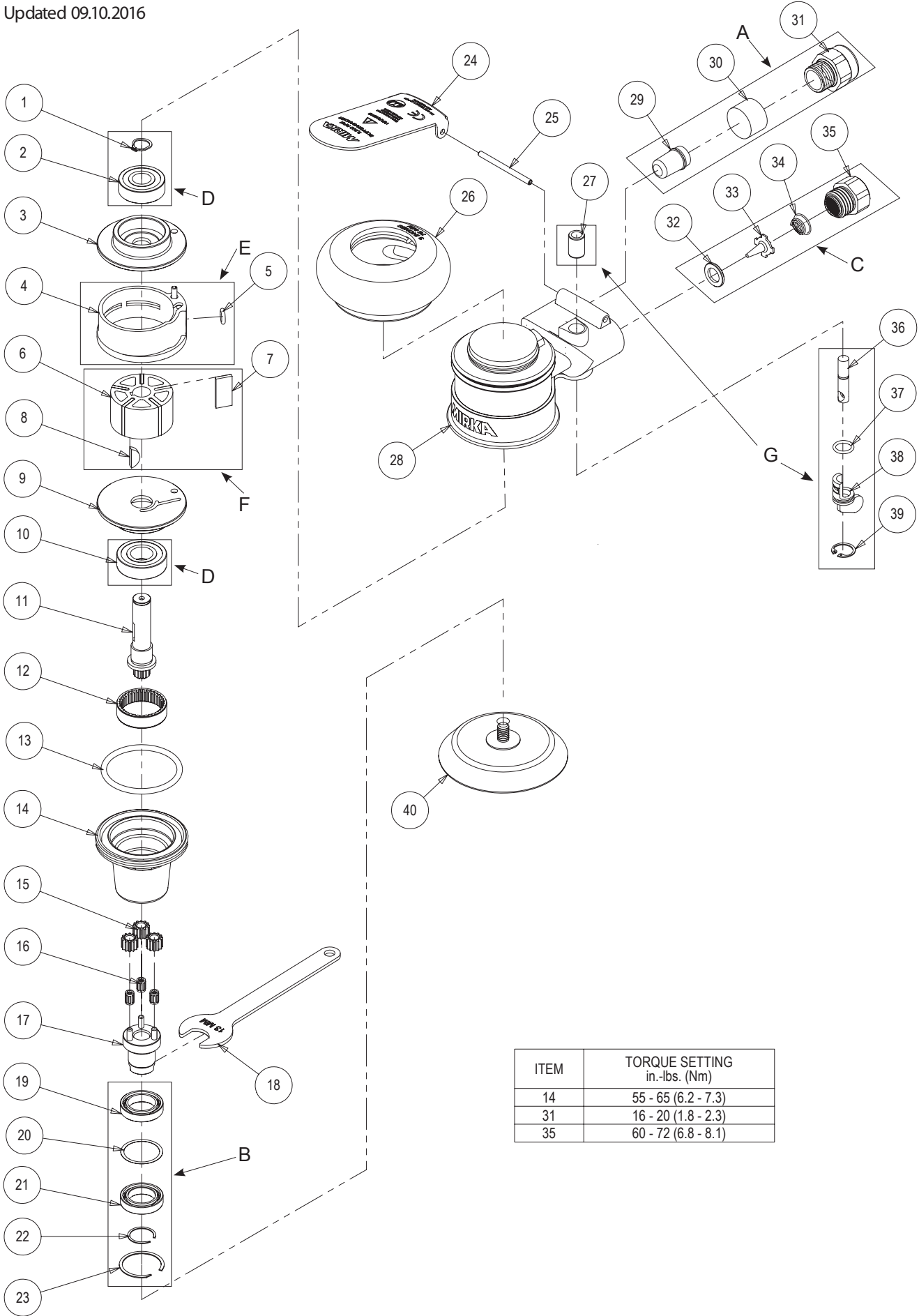




# Exploded view of RP 300NV, 77 mm

Updated 09.10.2016



ITEM	TORQUE SETTING in.-lbs. (Nm)
14	55 - 65 (6.2 - 7.3)
31	16 - 20 (1.8 - 2.3)
35	60 - 72 (6.8 - 8.1)

## RP 77 mm Kits

Mirka code	Item Description	Kit	Part No	QTY
8993017311	<b>A Muffler Kit 12 000 rpm</b>		MPA0797	
	29 Internal Muffler (for 3,000 & 12,000 rpm machines)	<b>A</b>	MPA0062	1
	30 Muffler Insert (for 3,000 & 12,000 rpm machines)		MPA0068	1
	31 Muffler Housing		MPA0166	1
8994222711	<b>B RP2 Planetary Spindle Bearing Kit</b>		MPA2226	
19 Bearing	<b>B</b>	MPA0147	1	
20 Spacer		MPA0213	1	
21 Bearing		MPA0148	1	
22 Retaining Ring		MPA0110	1	
23 Retaining Ring		MPA0117	1	
8993018811	<b>C Air Inlet Kit</b>		MPA0798	
	32 Seat	<b>C</b>	MPA0009	1
	33 Valve		MPA0007	1
	34 Valve Spring		MPA0014	1
35 Inlet Bushing	MPA0013		1	
8993019811	<b>D Endplate Bearing Kit</b>		MPA0799	
	1 Retaining Ring	<b>D</b>	MPA0040	1
	2 Bearing		MPA0021	1
	10 Bearing		MPA0019	1
8993009211	<b>E Cylinder And O-Ring Kit (77 mm [3 In.] machines only)</b>			MPA0994
4 Cylinder Assembly	<b>E</b>	MPA0005	1	
5 O-Ring		MPA0042	1	
8993017711	<b>F Rotor, Vanes And Key Kit</b>		MPA0801	
	6 Rotor	<b>F</b>	MPB0005	1
	7 Vane		MPA0010	5
	8 Key		MPA0041	1
8993019011	<b>G Speed Valve Kit</b>			MPA0800
27 Valve Sleeve	<b>G</b>	MPA0015	1	
28 Mini Housing		MPA0703	1	
36 Valve Stem Assembly		MPA0008	1	
37 O-Ring		MPA0043	1	
38 Speed Control		MPB0014	1	
39 Retaining Ring		MPA0039	1	
8994221811		Planet Gear Assy Kit		MPA2930
12 Ring Gear	<b>x</b>	MPA0151	1	
15 Planet Gear Kit (3 pcs x MPA0152)		MPA2636	3	
16 Needle Bearing Kit (3 pcs x MPA0224)		MPA2638	3	
8994242211	Spindle Housing And O-Ring Kit		MPA2901	
13 O-Ring	<b>x</b>	MPA0045	1	
14 Spindle Housing		MPB0060	1	
8993522411	Lever Kit 3 000 rpm for RP 300NV		MPA2893	
24 Lever	<b>x</b>	MPA1168	1	
25 Lever Spring Pin		MPA0031	1	

Separate parts on next page

## RP 77 mm Spare parts

Mirka code	Item	Description	Kit	Part No	QTY
	1	Retaining Ring	D	MPA0040	1
	2	Bearing	D	MPA0021	1
<b>8993009311</b>	<b>3</b>	<b>Rear Endplate</b>		MPB0017	1
	4	Cylinder Assembly	E	MPA0005	1
	5	O-Ring	E	MPA0042	1
	6	Rotor	F	MPB0005	1
	7	Vane	F	MPA0010	5
	8	Key	F	MPA0041	1
<b>8993009411</b>	<b>9</b>	<b>Front Endplate</b>		MPB0016	1
	10	Bearing	D	MPA0019	1
8994242511	11	Motor Shaft Assembly		MPA0293	1
	12	Ring Gear	x	MPA0151	1
8993008311	13	O-Ring	x	MPA0045	1
	14	Spindle Housing	x	MPB0060	1
8994241811	15	Planet Gear Kit (3 pcs x MPA0152)		MPA2636	3
8994241911	16	Needle Bearing Kit (3 pcs x MPA0224)		MPA2638	3
8994242411	17	Assembly For Planetary Spindle 1/4-20 UNC-2B		MPA0456	1
8994008011	18	Wrench 13 mm		MPA0145	1
	19	Bearing	B	MPA0147	1
	20	Spacer	B	MPA0213	1
	21	Bearing	B	MPA0148	1
	22	Retaining Ring	B	MPA0110	1
	23	Retaining Ring	B	MPA0117	1
	24	Lever	x	MPA1168	1
	25	Lever Spring Pin	x	MPA0031	1
8993013811	26	65 mm (2 1/2 In.) Grip (Optional)		MPA0288	OPT.
8993016011	26	70 mm (2 3/4 In.) Grip (Optional)		MPA0289	OPT.
8993013511	26	75 mm (3 In.) Grip (Standard))		MPA0290	1
	27	Valve Sleeve	G	MPA0015	1
	28	Mini Housing	G	MPA0703	1
	29	Internal Muffler (for 3,000+12,000 rpm machines)	A	MPA0062	1
	30	Muffler Insert (for 3,000+12,000 rpm machines)	A	MPA0068	1
	31	Muffler Housing	A	MPA0166	1
	32	Seat	C	MPA0009	1
	33	Valve	C	MPA0007	1
	34	Valve Spring	C	MPA0014	1
	35	Inlet Bushing	C	MPA0013	1
	36	Valve Stem Assembly	G	MPA0008	1
	37	O-Ring	G	MPA0043	1
	38	Speed Control	G	MPB0014	1
	39	Retaining Ring	G	MPA0039	1
<b>8294791311</b>	<b>40</b>	<b>Backing Pad 77mm 1/4" Grip Medium</b>			<b>1</b>